

**NAUTILUS**  
 Nautilus, Inc.  
 16400 SE Nautilus Drive, Vancouver, WA 98683

UNLESS OTHERWISE SPECIFIED:  
 1. ALL DIMENSIONS APPLY BEFORE PLATING OR COATING.  
 2. REMOVE ALL BURRS, BREAK SHARP EDGES .020 IN MAX.  
 3. ALL MACHINED SURFACES Ra 125 uIN.  
 3. ALL APPLICABLE NAUTILUS STANDARDS AND SPECIFICATIONS APPLY.

INCH

THIRD ANGLE PROJECTION

TOLERANCES.  
 .X ±.1  
 .XX ±.03  
 .XXX ±.010  
 ANGLES:  
 BENT ± 2°  
 MACHINED ± 0°30"  
(INTERPRET DIMENSIONS AND TOLERANCES PER ASME Y14.5M - 1994)

|          |            |
|----------|------------|
| DESIGNED | --         |
| DRAWN    | --         |
| DATE     | 10/25/2007 |

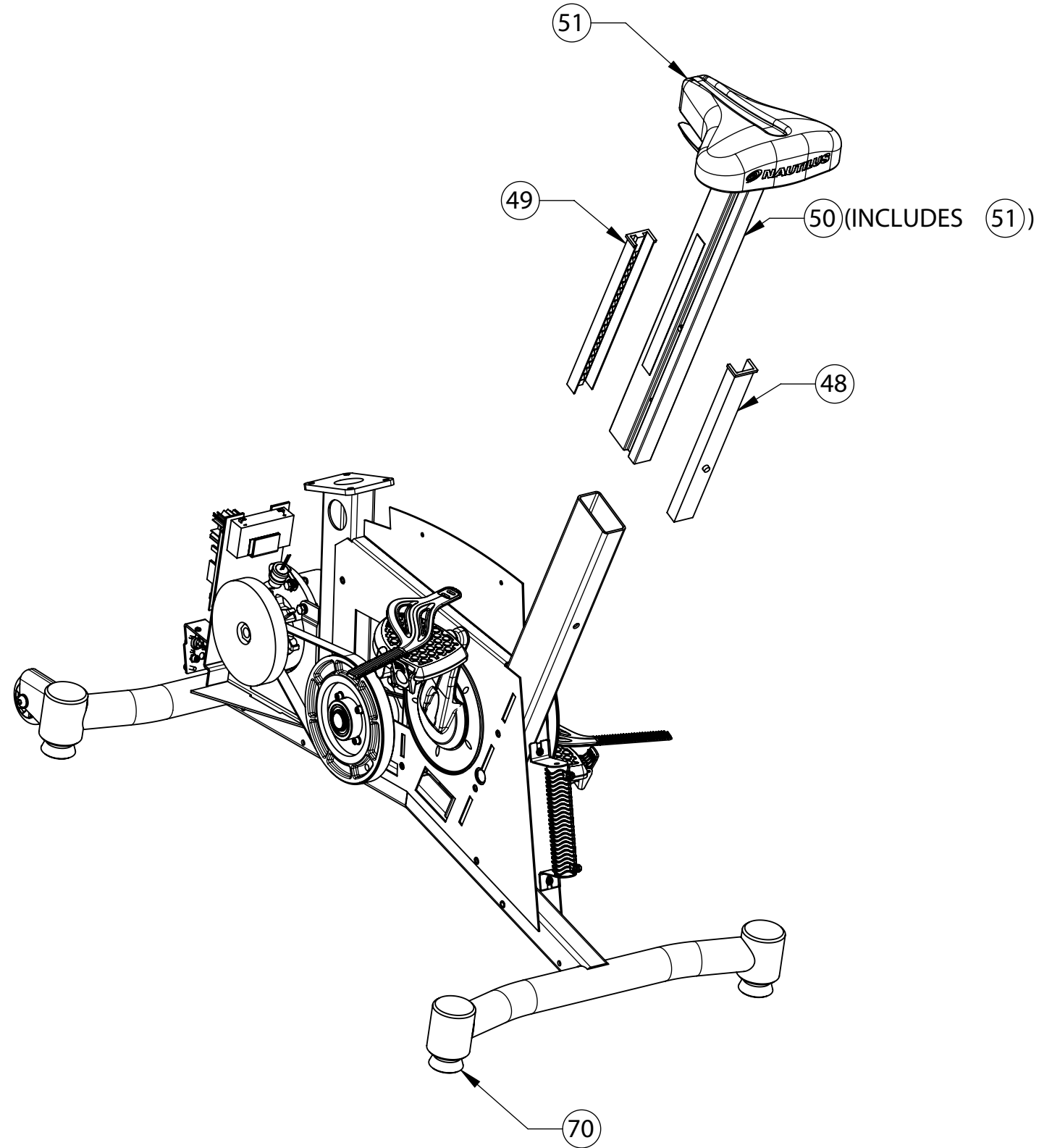
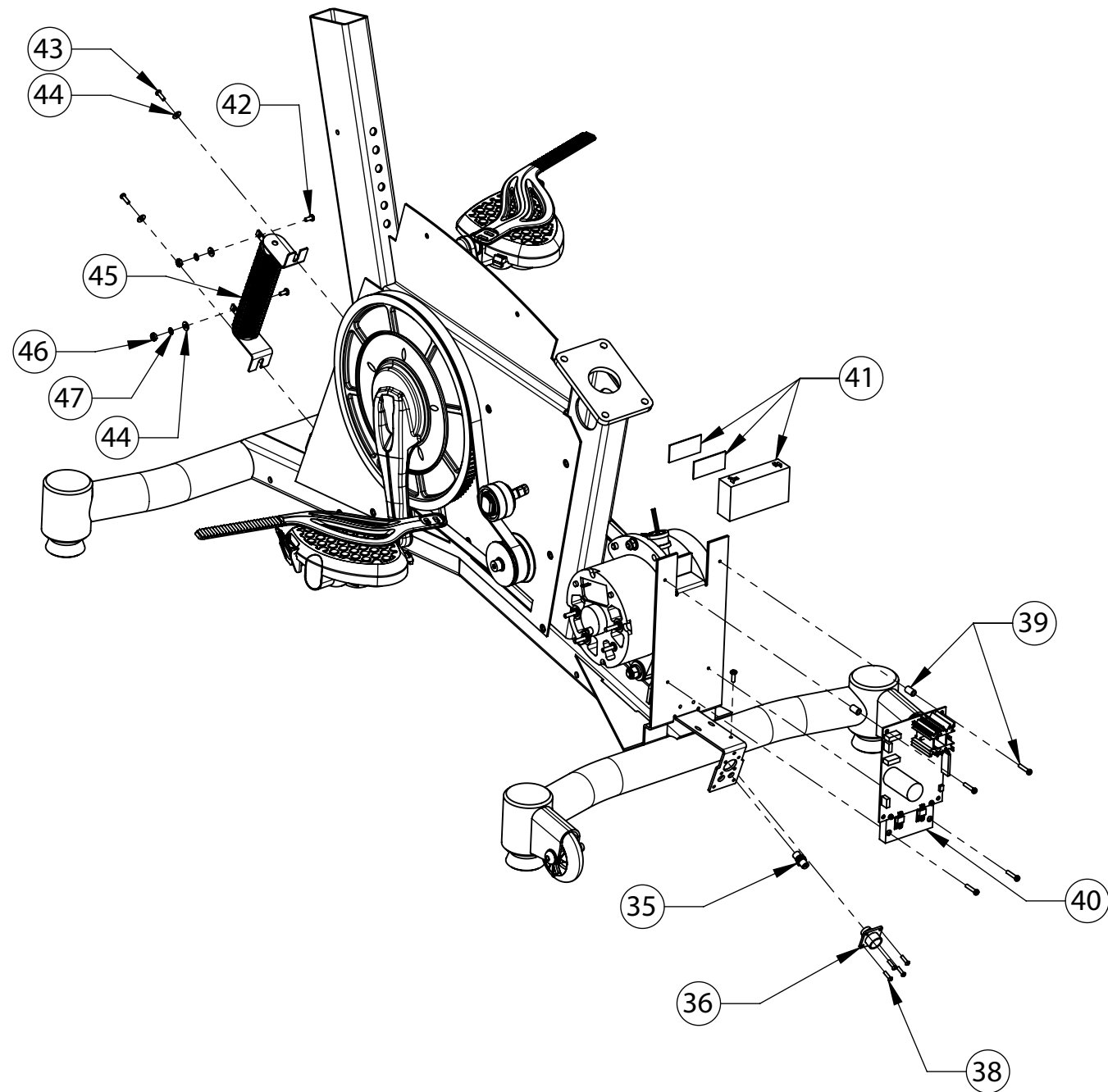
ASSEMBLY, U916

DO NOT SCALE DRAWING

This document is the property of Nautilus, Inc. It may not be reproduced in whole or part, provided to third parties, or used for any purposes other than the performance of work for Nautilus, Inc. without written authorization. All rights are reserved, including copyrights.

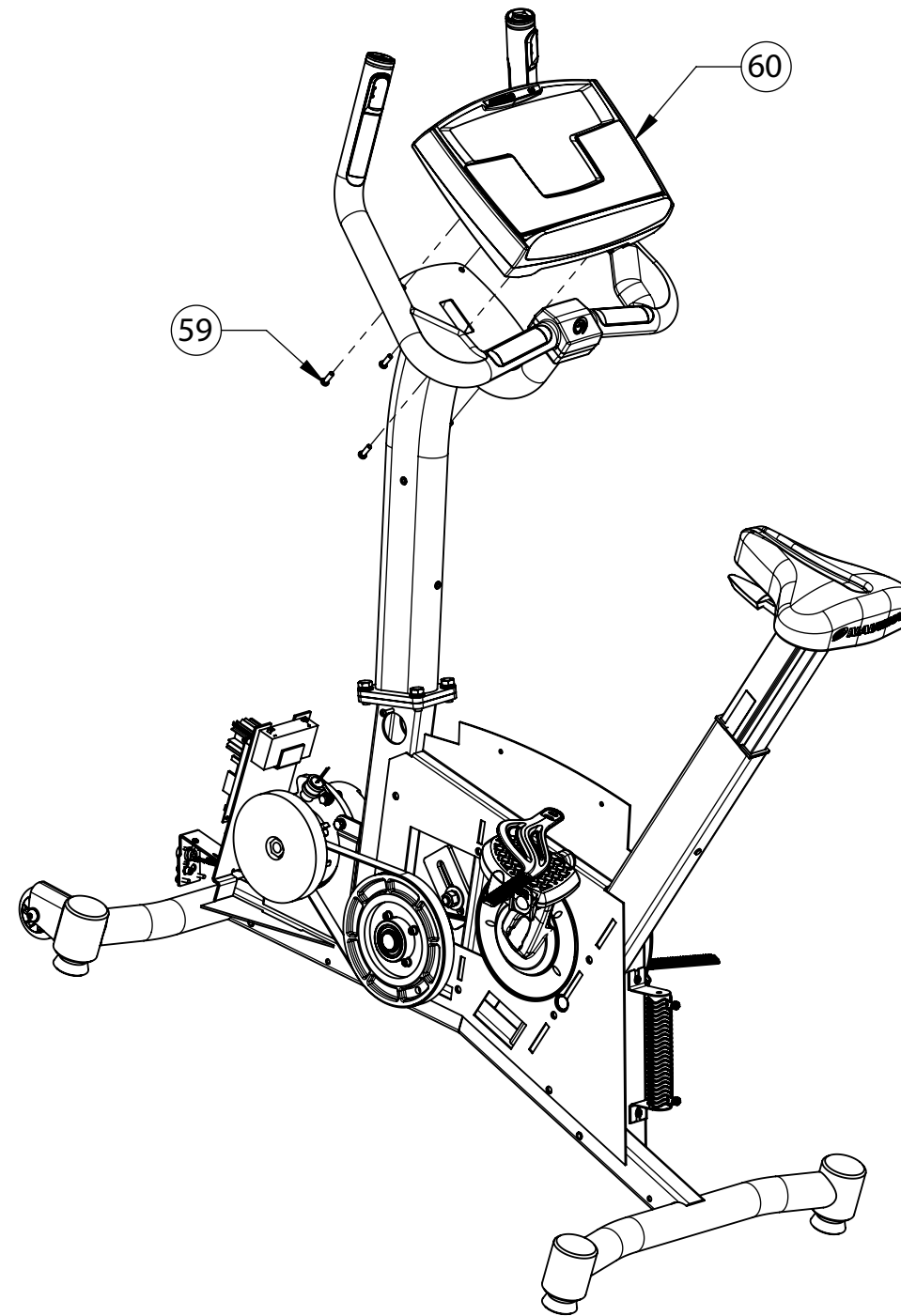
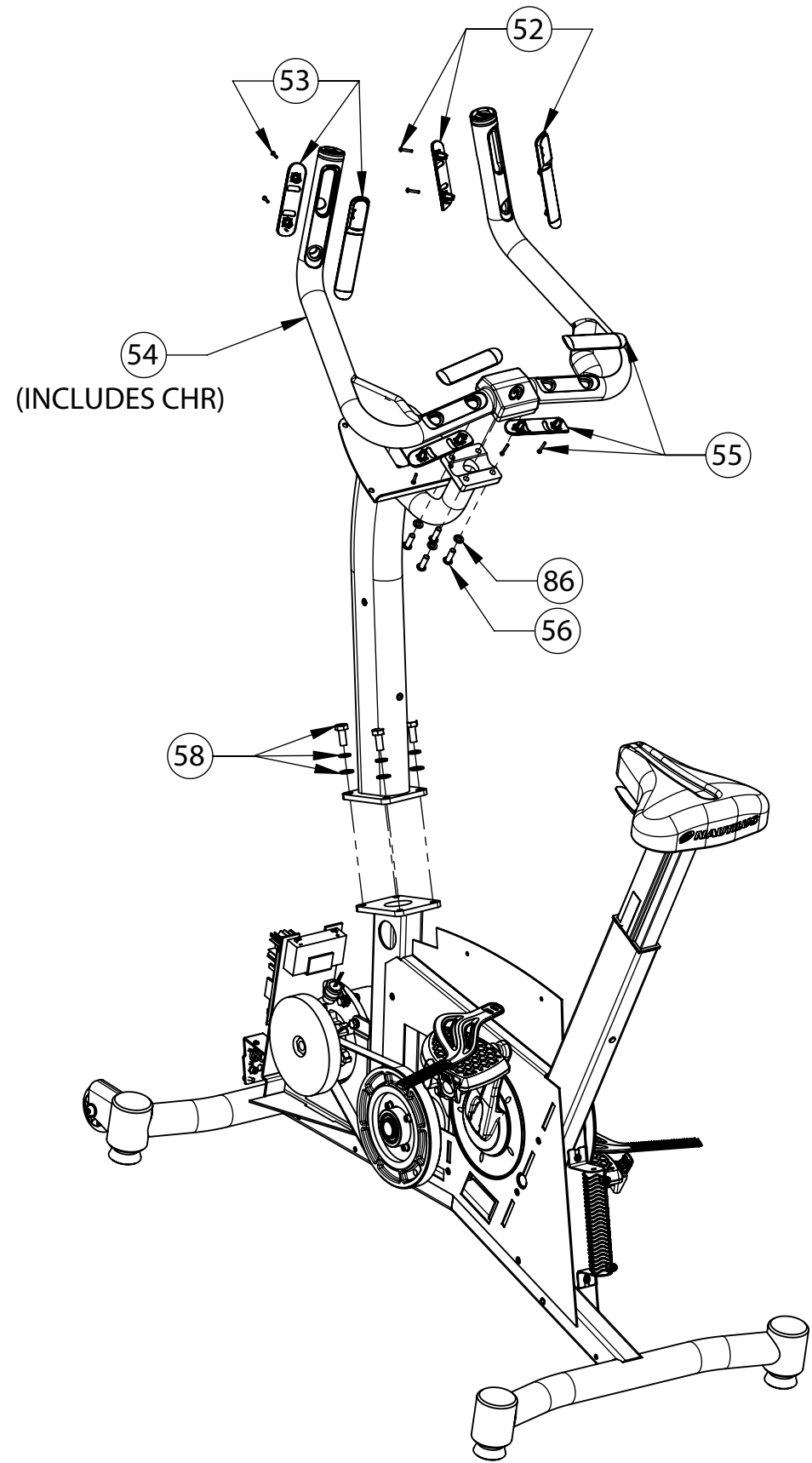
SCALE: 1:24

SHEET 1 OF 4



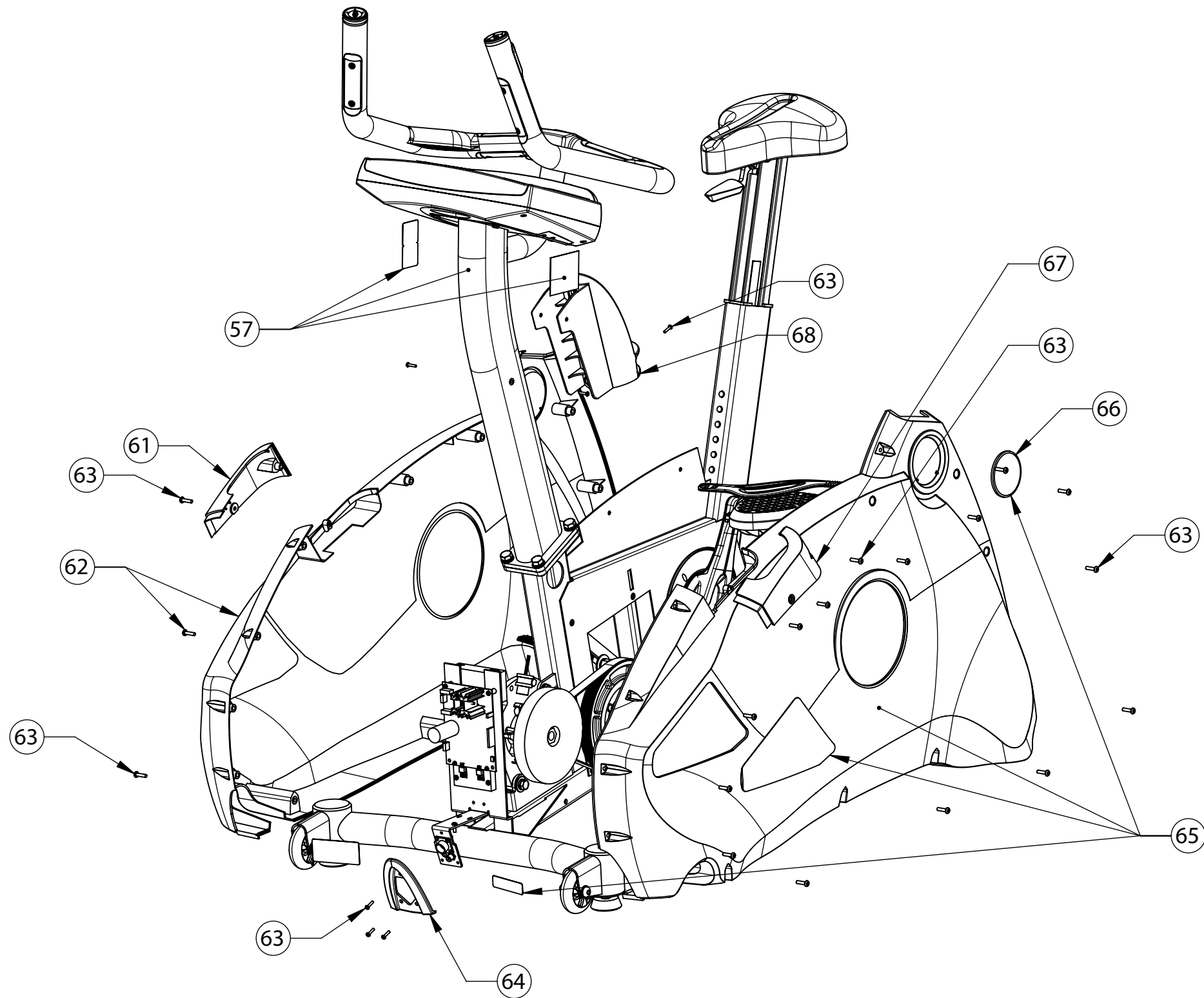
Nautilus, Inc.  
16400 SE Nautilus Drive, Vancouver, WA 98683

ASSEMBLY, U916



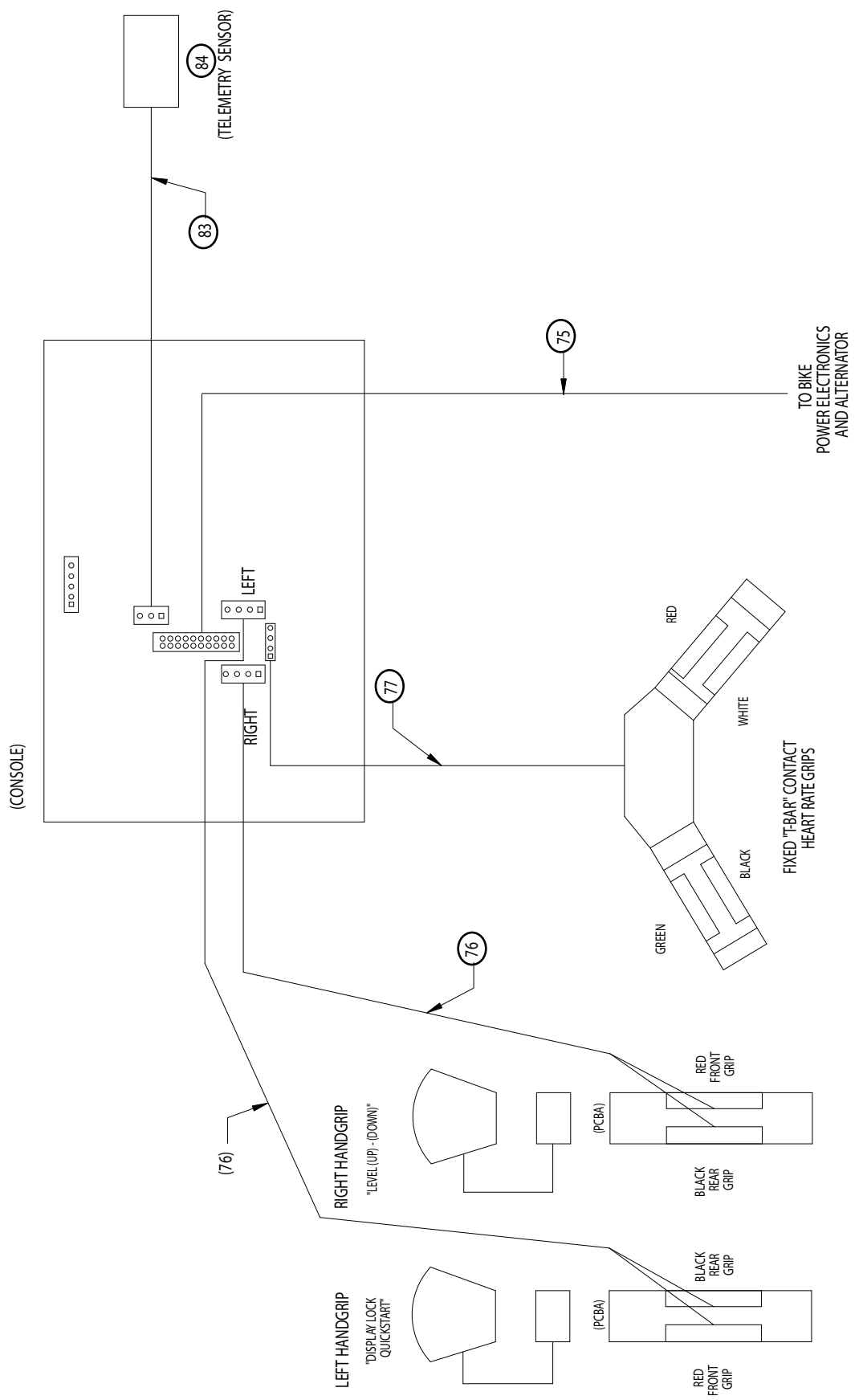
Nautilus, Inc.  
16400 SE Nautilus Drive, Vancouver, WA 98683

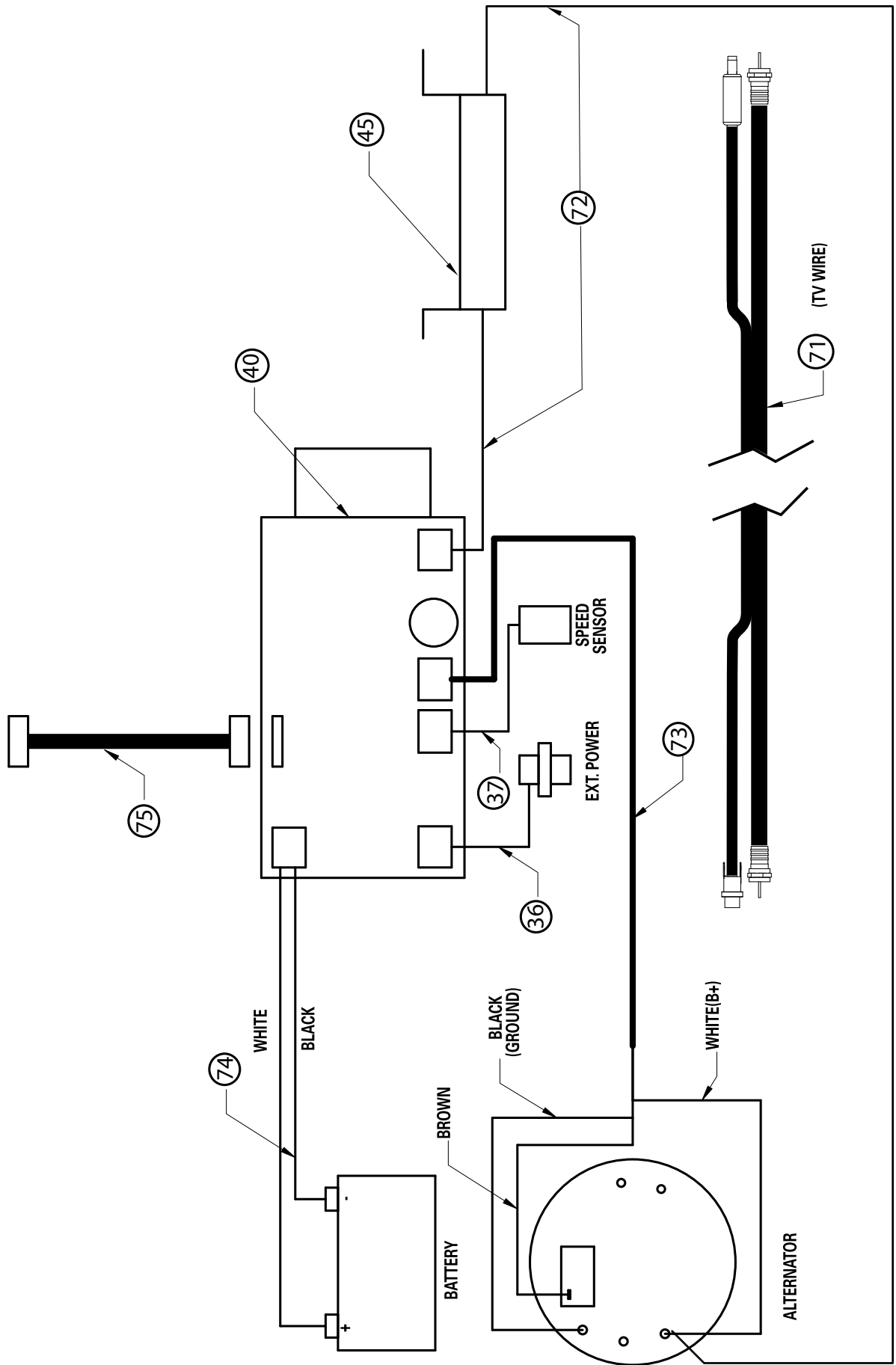
ASSEMBLY, U916



Nautilus, Inc.  
16400 SE Nautilus Drive, Vancouver, WA 98683

ASSEMBLY, U916



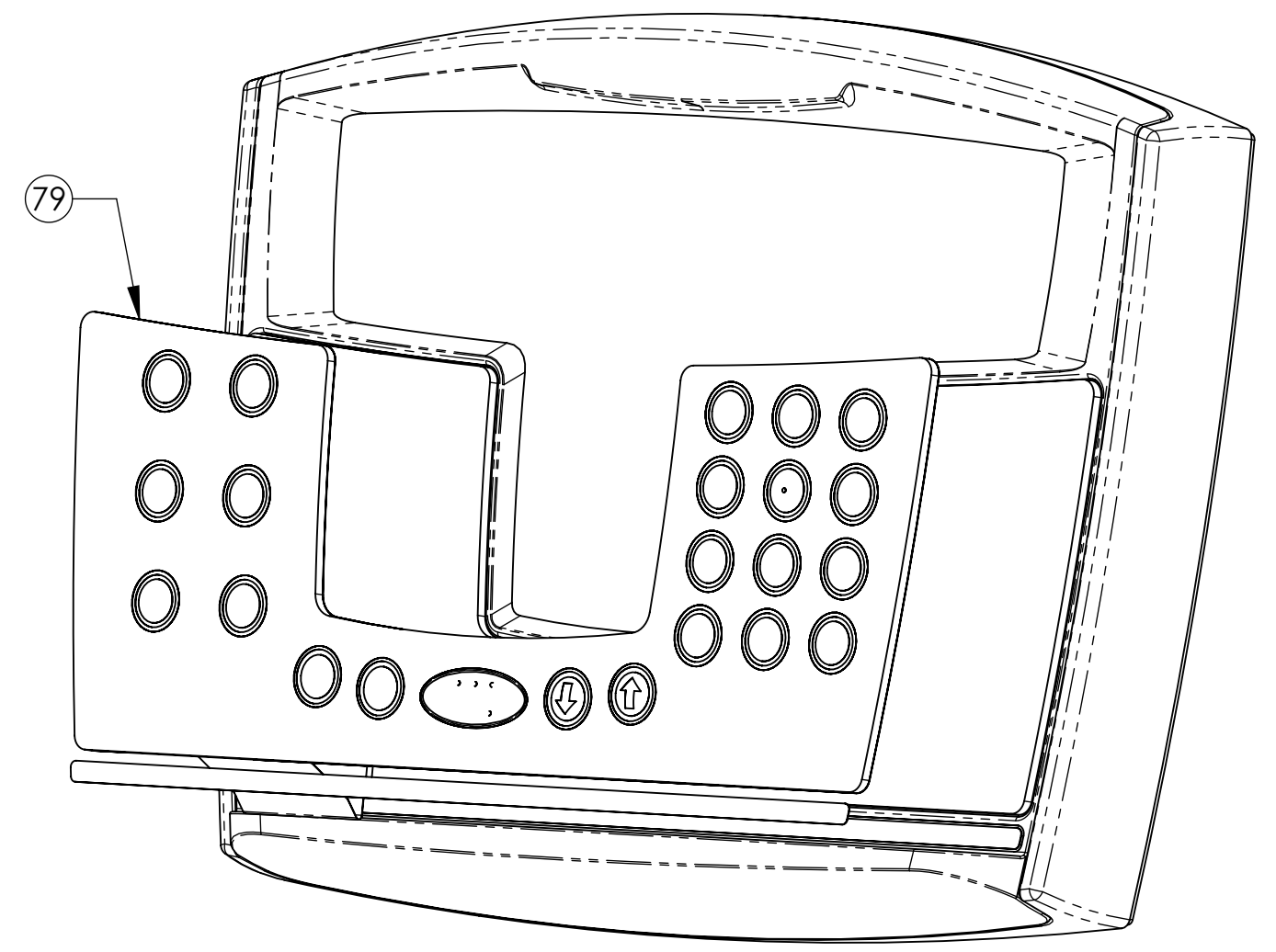
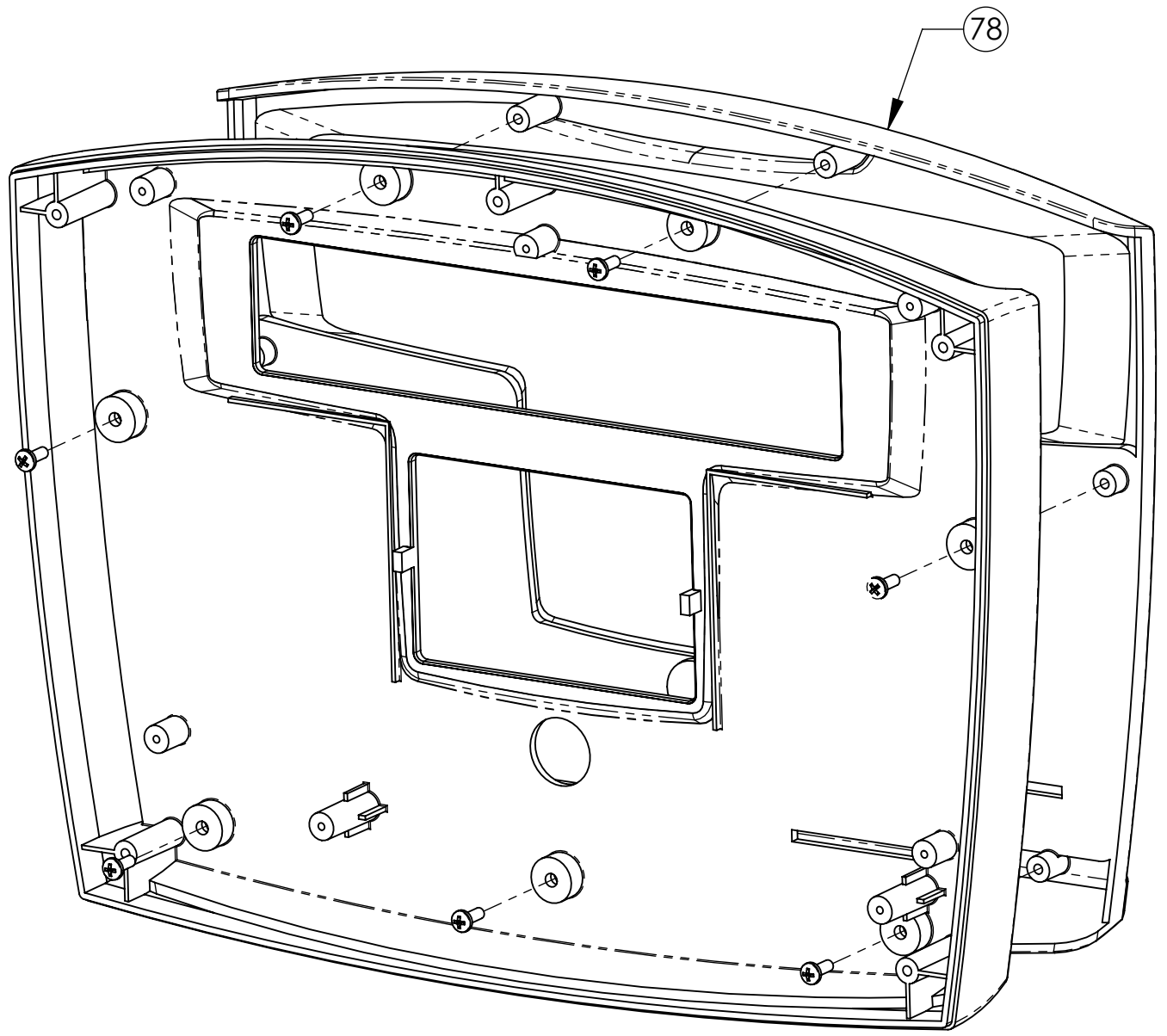


WHITE

8 7 6 5 4 3 2 1

D  
C  
B  
A

D  
C  
B  
A



PROPRIETARY AND CONFIDENTIAL  
THIS DOCUMENT IS THE PROPERTY OF  
THE NAUTILUS GROUP.  
(SEE SHEET 1 FOR FULL TEXT)

THE NAUTILUS GROUP

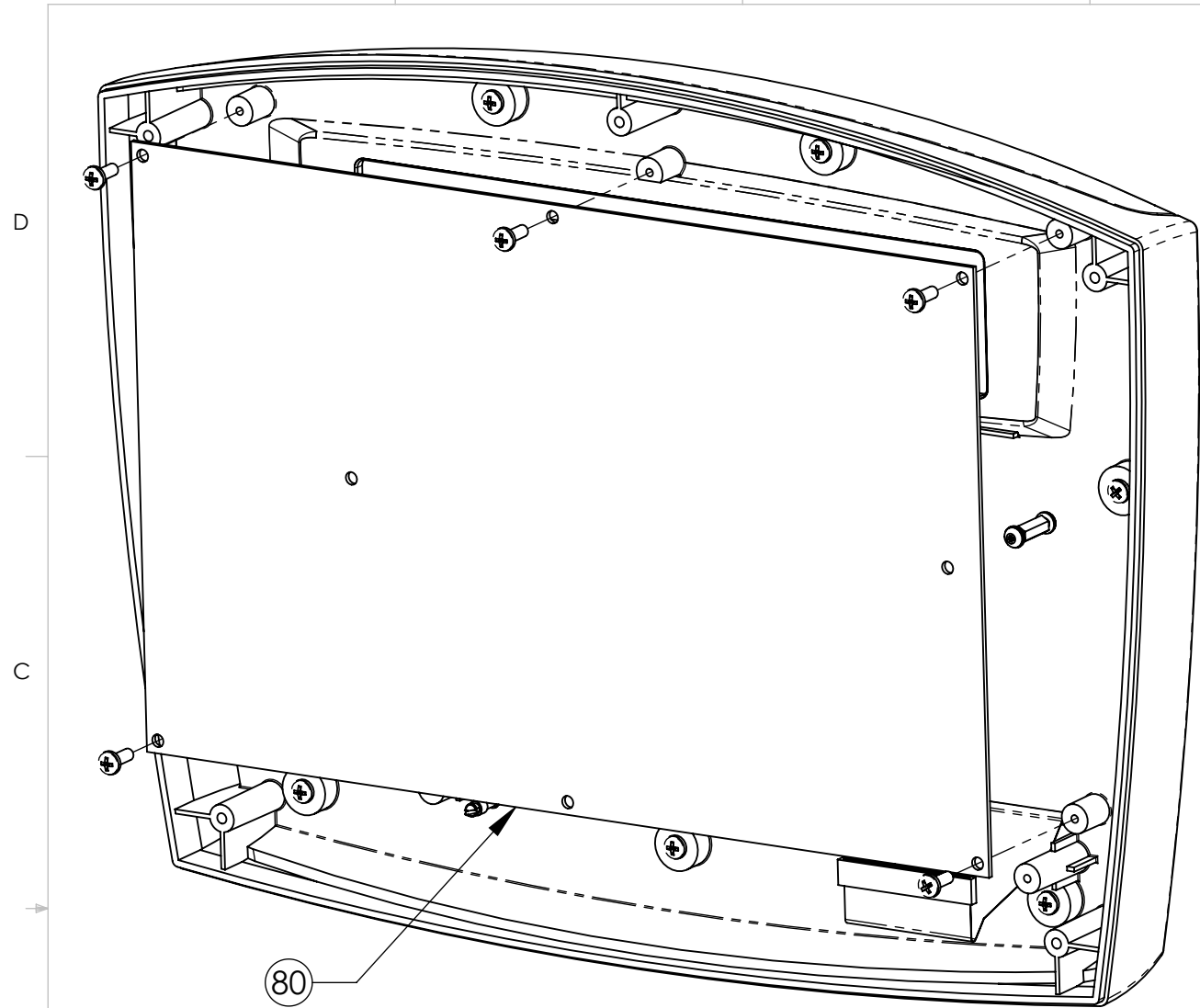
CONSOLE

SCALE: 1:4

SHEET 1 OF 3

8 7 6 5 4 3 2 1

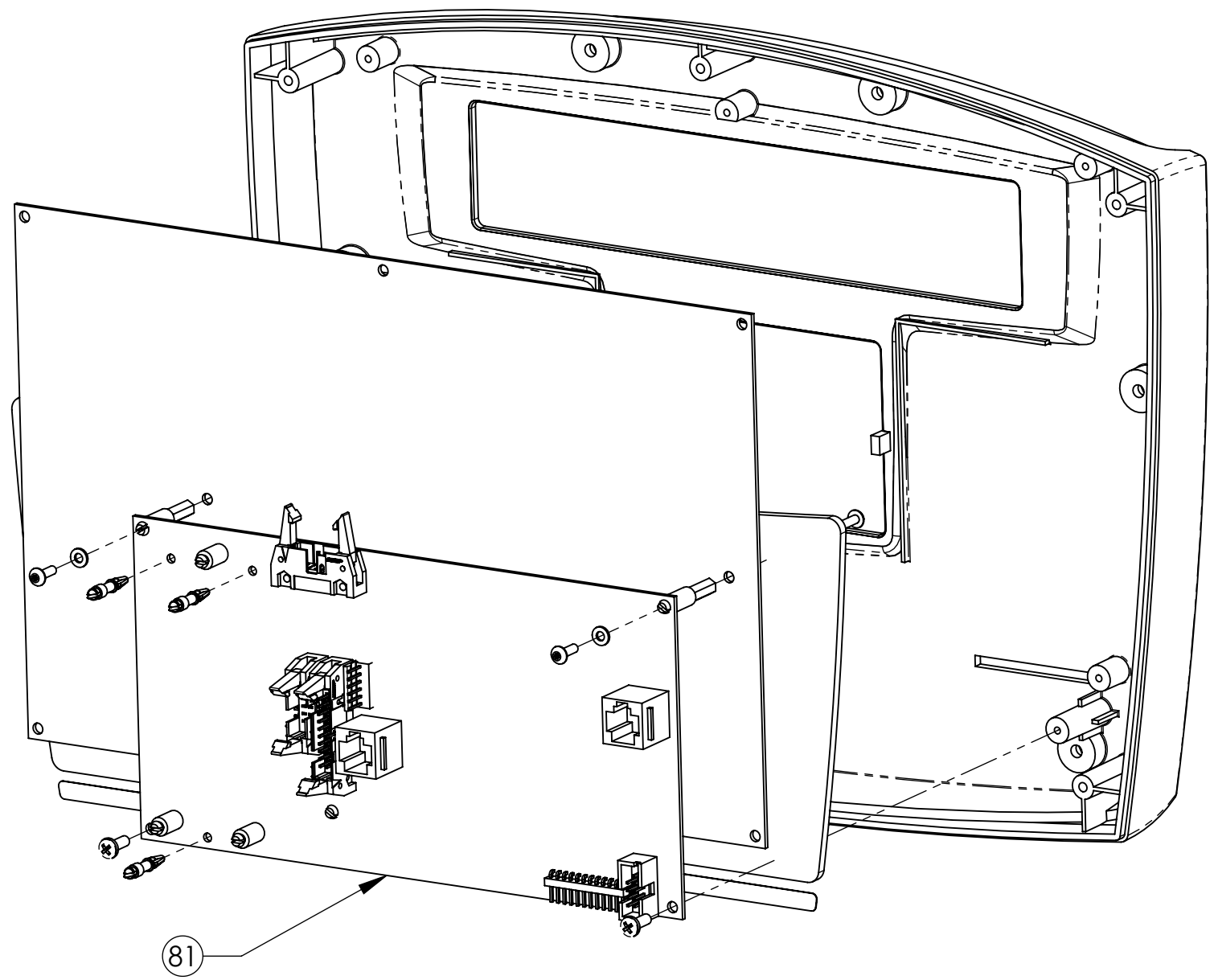
8 7 6 5 4 3 2 1



B

A

8 7 6 5 4 3 2 1



D

C

B

A

PROPRIETARY AND CONFIDENTIAL  
THIS DOCUMENT IS THE PROPERTY OF  
THE NAUTILUS GROUP.  
(SEE SHEET 1 FOR FULL TEXT)

THE NAUTILUS GROUP

CONSOLE

SCALE: 1:4

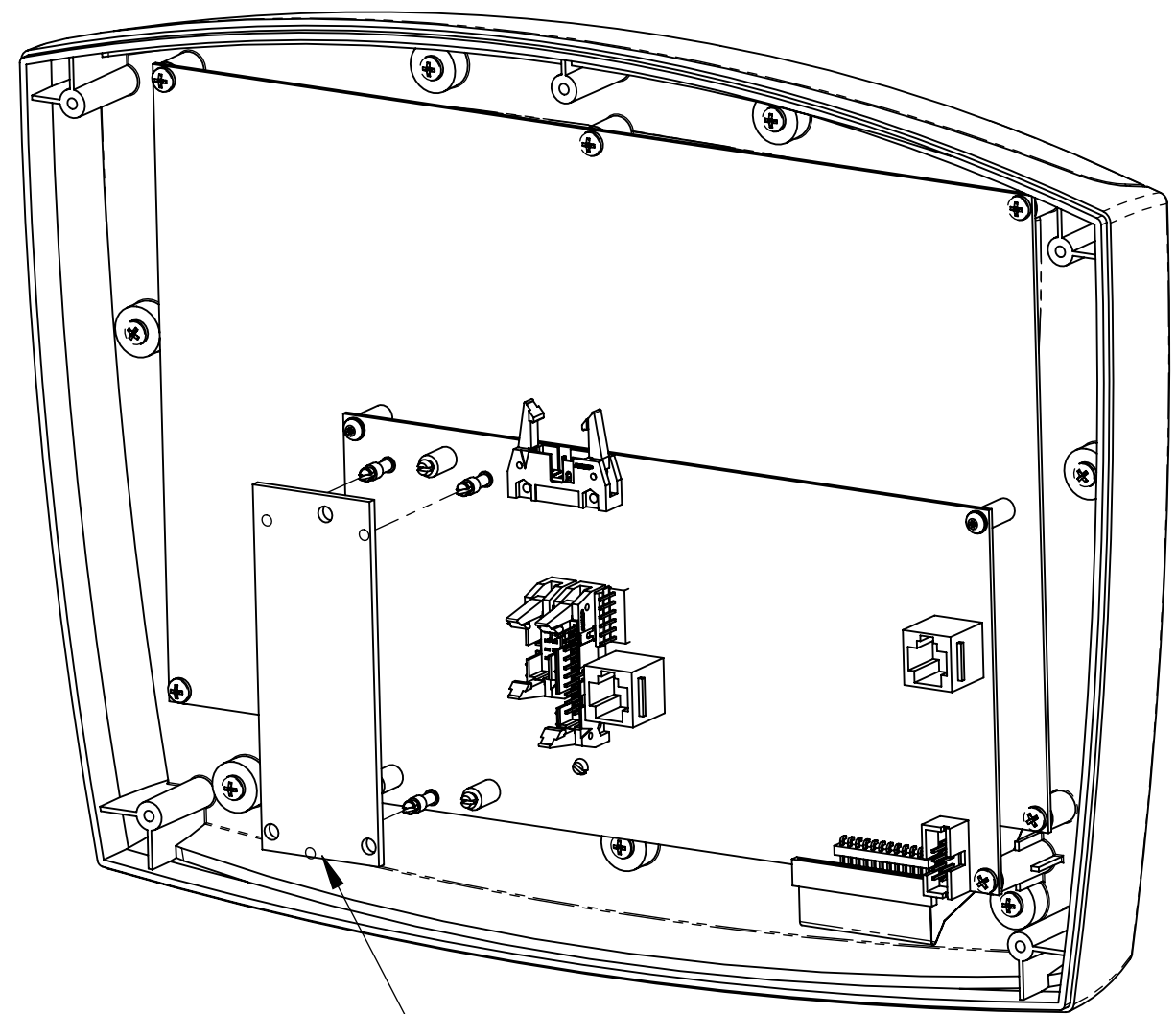
SHEET 2 OF 3



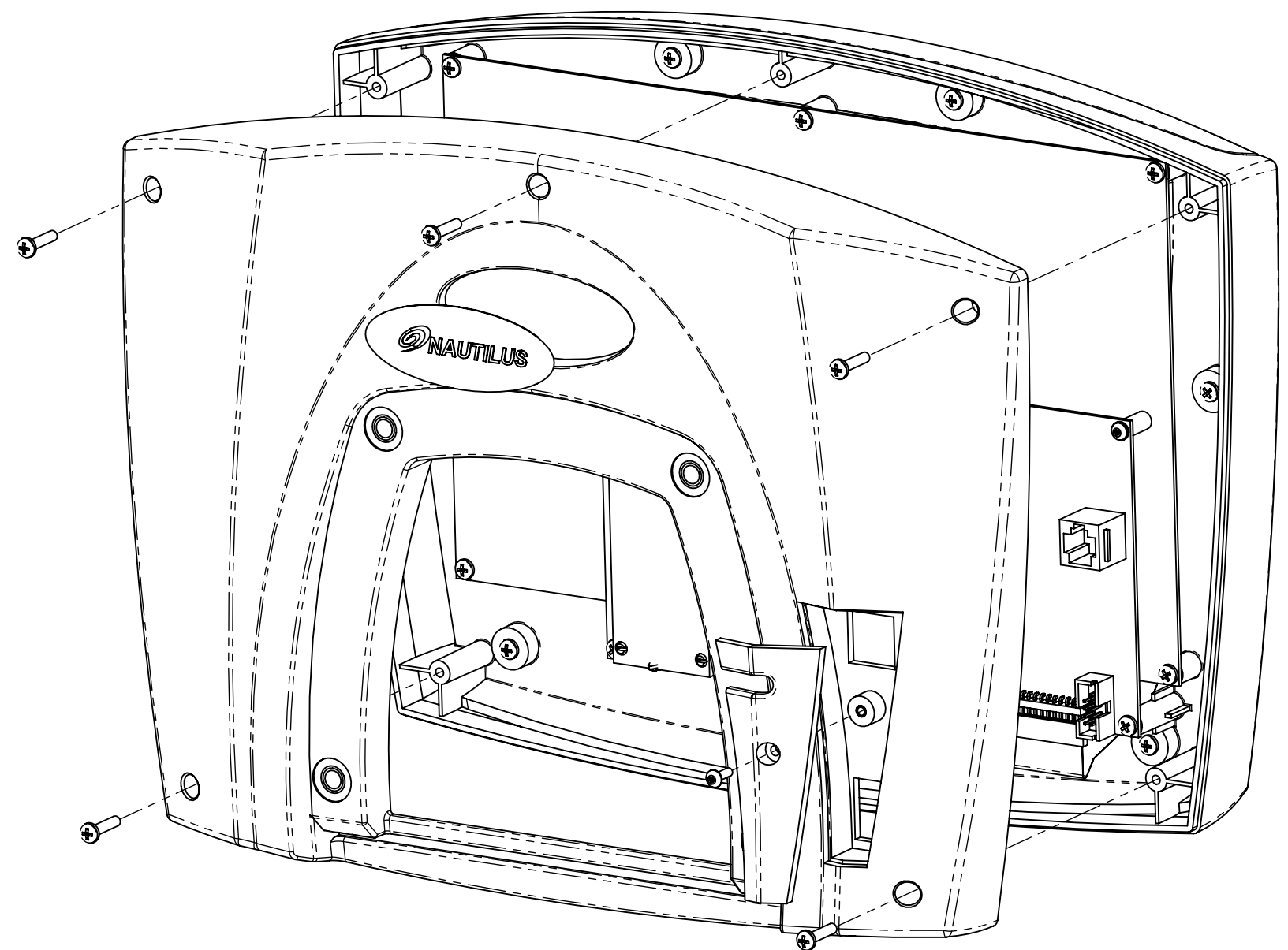
8 7 6 5 4 3 2 1

D  
C  
B  
A

D  
C  
B  
A



82



PROPRIETARY AND CONFIDENTIAL  
THIS DOCUMENT IS THE PROPERTY OF  
THE NAUTILUS GROUP.  
(SEE SHEET 1 FOR FULL TEXT)

THE NAUTILUS GROUP

CONSOLE

SCALE: 1:4

SHEET 3 OF 3

8 7 6 5 4 3 2 1

U916, UPRIGHT BIKE, WBOM, DOMESTIC SKU#380000

| REF. NO: | PART NO.   | DESCRIPTION  |
|----------|------------|--|
| 1        | 001-0343   | (CS) Assy, Frame, U916   |
| 2        | SM40594    | BRNG, Ball, 25mmx47mmx12mm   |
| 3        | SM17692    | SNAP RING, EXTERNAL, 25MM DIA.                                     |
| 4        | 000-6229   | PULLEY, 8M INTERMEDIATE 22T  |
| 5        | 902-4725   | SCW-SHCS M8-1.25 x 20 G2 BLKZ                                      |
| 6        | 902-6024   | WSH-FLAT M8 WIDE BLKZ  |
| 7        | SM22077    | Nut, Hex, .375   |
| 8        | SM23729    | Washer, 3/8 Split Lock Zinc PL                                     |
| 9        | SM22030    | Washer, 3/8 USS Flat - Zinc  |
| 10       | SM22191    | WASHER, SHOULDER, .38 I.D.   |
| 11       | 000-6240   | Assembly, Alternator/Sensor clamp                                  |
| 12       | 902-0401   | HHCS 0375-16 x 2.25  |
| 13       | SM22165    | SCREW, .312-18X1.00, HEX HD CAP                                    |
| 14       | SM22070    | Washer, 5/16 Med Lock  |
| 15       | SM22128    | WASHER, STEP SHAFT 5/16 FLAT                                       |
| 16       | 000-6432   | BELT, ALTERNATOR, U/R916   |
| 17       | SM002-0636 | Assy, Intermed Hub, W/shaft, U/R916                                |
| 18       | 000-6214   | INTERMEDIATE pulley  |
| 19       | SM002-0637 | HW, Mntg, Intermed Pulley, U/R916                                  |
| 20       | SM21778    | NUT, FLANGE, .635 UNF 18, ALT/FLY                                  |
| 21       | 000-6238   | Flywheel, U/R916   |
| 22       | SM22517    | DISK, SPEED SENSOR   |
| 23       | 001-0342   | (CS) Kit, Pedals, LH/RH, U/R916                                    |
| 24       | 001-0391   | Right Crank Arm, U/R916  |
| 25       | 001-6365   | DISC CRANK   |
| 26       | 000-6248   | PULLEY, 112 TOOTH, 8M  |
| 27       | 000-6232   | Belt Tensioner   |
| 29       | SM002-0638 | HW, Mntg, Belt Tensioner, U/R916                                   |
| 30       | 000-6324   | Left Crank Arm   |
| 31       | 902-4707   | SCW-SHCS M6-1.0 x 10 G2 BLKZ                                       |
| 32       | 000-6244   | ISIS BB, 73 x 128mm  |
| 33       | 000-6291   | BELT JASON 1120-8MT-16   |
| 34       | SM002-0639 | HW, Mntg, Pulley 112 Tooth, U/R916                                 |
| 35       | SM17787    | CONNECTOR, RF, 3mm, F  |
| 36       | SM13587    | Assembly, Cable, External Power                                    |
| 37       | SM21445    | ASSY., SPEED SENSOR, CLIM. SYS, CL                                 |
| 38       | 002-0356   | SCREW, 6-32 X 1/2, PHIL HD   |
| 39       | SM002-0640 | HW, Mntg, Power Board, U/R916                                      |
| 40       | SM27451    | Assembly, PCBA, Power Control                                      |
| 41       | SM14123    | 5100 Battery kit (includes Battery, Loop & Hook Velcro, and Tyrap) |
| 42       | SM22134    | Screw, 8-32 NC X 3/8 Philips                                       |
| 43       | 902-5864   | SCREW, PHP, M4-0.7X12 SS   |
| 44       | SM13580    | Washer, #8 Sae Flat  |
| 45       | 000-6217   | POWER RESISTOR   |
| 46       | SM22110    | Nut, 8-32 NC Hex Mach,   |
| 47       | SM22109    | Washer, #8 Int, Tooth Lock   |
| 48       | 000-6297   | SEAT POST SLEEVE   |

|           |            |   |
|-----------|------------|---|
| 49        | 000-6255   | SEAT ADJUSTMENT TEETH   |
| 50        | 000-6269   | ASSEMBLY, SEAT POST   |
| 51        | 000-6264   | SEAT, MED WIDTH   |
| 52        | 001-0349   | KIT, CHR,RH UPPER HANDLE, U/R916 (LEVEL UP & DOWN)                        |
| 53        | 001-0348   | KIT, CHR,LH UPPER HANDLE, U/R916 (DSPLY LCK/UNLCK & START)                |
| 54        | 001-0459   | Assy, U9, Handlebar   |
| 55        | 001-6341   | ASSYEMBLY,CHR,NON ROC   |
| 56        | 902-5681   | SCW-SHCS, M8-1.25 X 25 SS   |
| 57        | 000-6221   | ASSEMBLY,MAST   |
| 58        | SM002-0641 | HW,MNTG,MAST TO LWR BODY,U/R916   |
| 59        | SM40670    | SCREW,1/4-20X.75,PAN HD,W/LOCK  |
| 60        | SM41700    | Assembly, Console, U916   |
| 61        | 000-6260   | Shroud, Mast, Plastic, Right  |
| 62        | 001-0341   | (CS) Assy, Side Cover, RH, U916   |
| 63        | 901-5493   | PHILLIPS 10-32 x .75  |
| 64        | 000-6257   | INLET COVER   |
| 65        | 001-0340   | (CS) ASSY,SIDE COVER,LH,U916  |
| 66        | 000-6491   | BADGE,3",COMMERCIAL,NAUTILUS  |
| 67        | 000-6259   | Shroud, Mast, Plastic, Left   |
| 68        | 001-0424   | WATER BOTTLE HOLDER   |
| 69        | 000-6247   | TRANSPORT WHEEL   |
| 70        | SM17686    | STABILIZER FOOT   |
| 71        | 000-6490   | Cable, Coaxial, TV/Power  |
| 72        | 002-9071   | Assembly, Cable, Load Resistor  |
| 73        | 002-9070   | Assembly, Cable, Alternator   |
| 74        | SM25465    | Assembly, Cable, Battery  |
| 75        | SM25473    | Assembly, Cable, Console Interface  |
| 76        | 001-5378   | Assembly, Cable, Contact Heart Rate                                       |
| 77        | SM40679    | Assembly, Cable, T-Bar Grip   |
| 78        | SM40803    | LENS,C51 CONSOLE  |
| 79        | SM40468    | KEYPANEL,CONSOLE  |
| 80        | SM40826    | PCB ASSY, C51 LCD DISPLAY   |
| 81        | SM40820    | PCBA ASSY   |
| 82        | SM27767    | IC, CONTACT HR W/MOUNT HEADER   |
| 83        | SM41702    | Assembly, Cable, Telemetry Heart Rate                                     |
| 84        | SM41187    | Assembly, PCBA, Heart Rate telemetry                                      |
| 85        | 002-0631   | WOODRUFF KEY,6mm x 6mm x 20mm   |
| 86        | SM27952    | WASHER,M8,SPLIT LOCK  |
|           |            |   |
| Not shown | 001-0501   | Power Supply, Dual (need to purchase SM002-0365 at same time)             |
| Not shown | 001-6882   | U/R916 Owner's Manual   |
| Not shown | 001-6883   | U916 Assembly Manual  |
| Not shown | 001-6884   | U/R916 Service Manual   |
| Not shown | 001-6992   | CD, Owners manual   |
| Not shown | 000-6406   | Cap,Pedal,LH,U/R916 (Snaps over pedal opening)                            |
| Not shown | 000-6415   | Cap,Pedal,RH,U/R916 (Snaps over pedal opening)                            |
| Not shown | 002-0523   | DECAL,SEAT POST,U916  |
| Not shown | 002-0719   | Kit,Pedal Ajustment Handle,U/R916 (Lever that holds Pedal strap in place) |
| Not shown | SM002-0365 | Power cord, Nema 5-15, 110V   |